

An aerial photograph of a campus, likely Salem State University, is shown with a semi-transparent blue overlay. The image captures various buildings, roads, and green spaces. The text is centered over the image.

NORTH CAMPUS PRECINCT PLAN

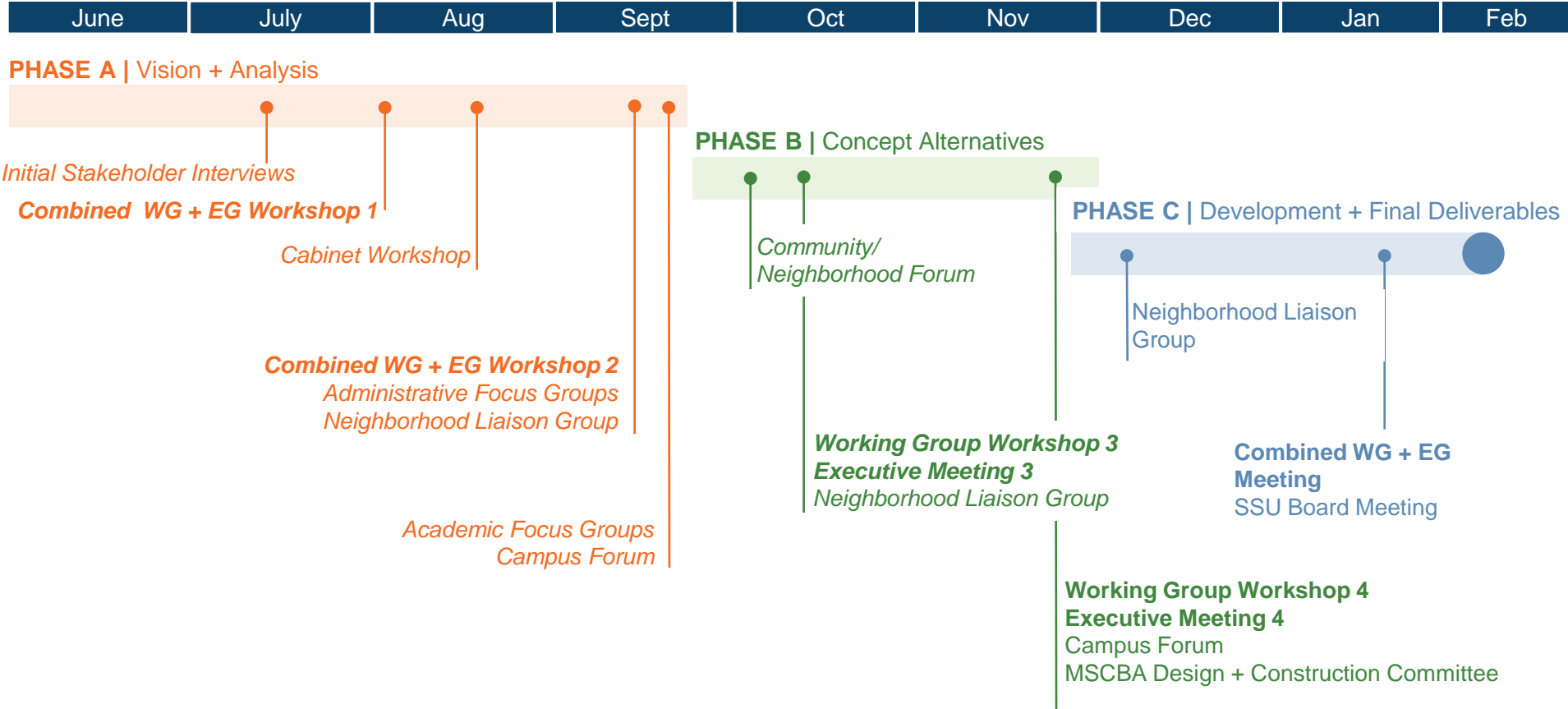
Final Draft | Salem State University

March 1, 2017

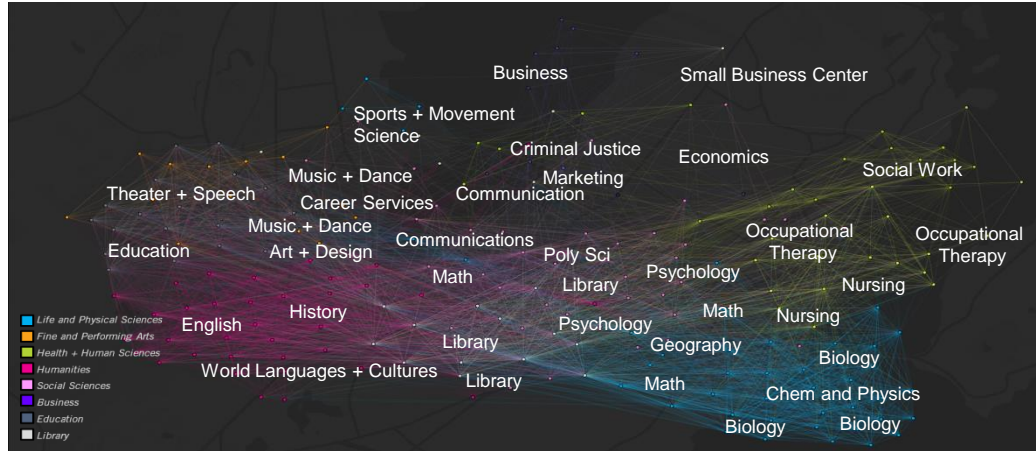
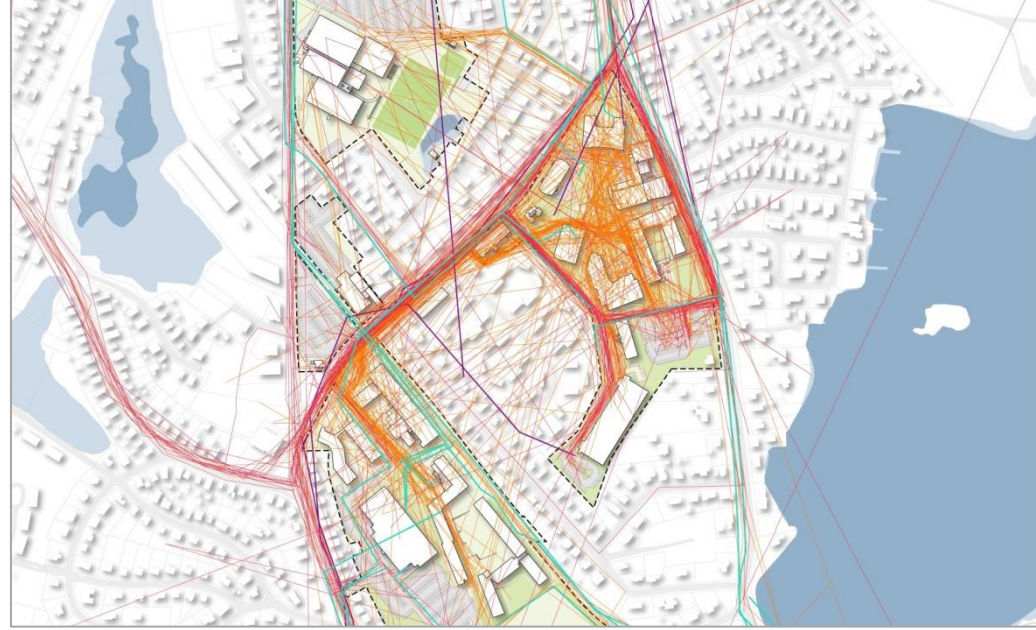
Purposes of the Study

1. Relocate South Campus Academic Programs to enable Horace Mann swap
 - Nursing
 - Occupational Therapy
 - Criminal Justice
 - Healthcare Studies
2. Update the 2013 Campus Master Vision with all that has been accomplished
3. Integrate with Governor Baker's ongoing Strategic Framework for Public Education

PROJECT SCHEDULE + ENGAGEMENTS



Community Engagement



Recurrent THEMES

Academics

- Key priority: relocation of all academic programs from South Campus to North Campus (including Nursing, Occupational Therapy, and Criminal Justice) to enable Horace Mann swap.
- Improve adjacencies among Humanities, Education, and STEM departments
- Address location and deferred maintenance issues related to Visual Arts

Student Life/ Academic Services

- Additional spaces to support Student Life programs such as conference and events, and office spaces for student organizations
- More flexibility in food choices, locations and hours
- Consolidation of student life and services

Administrative/ Administrative Services

- Large event space for campus-wide events and as possible revenue generator
- Co-location of related services
- Establish a “front door” to SSU

Campus

- Visitor and disability parking strategically located on campus
- Improve campus connectivity internally and to surrounding context

STAKEHOLDER MEETINGS

Academic

- Health + Human Sciences
- Life + Physical Sciences
- Visual + Performing Arts
- Humanities
- Social Sciences
- Business
- Education

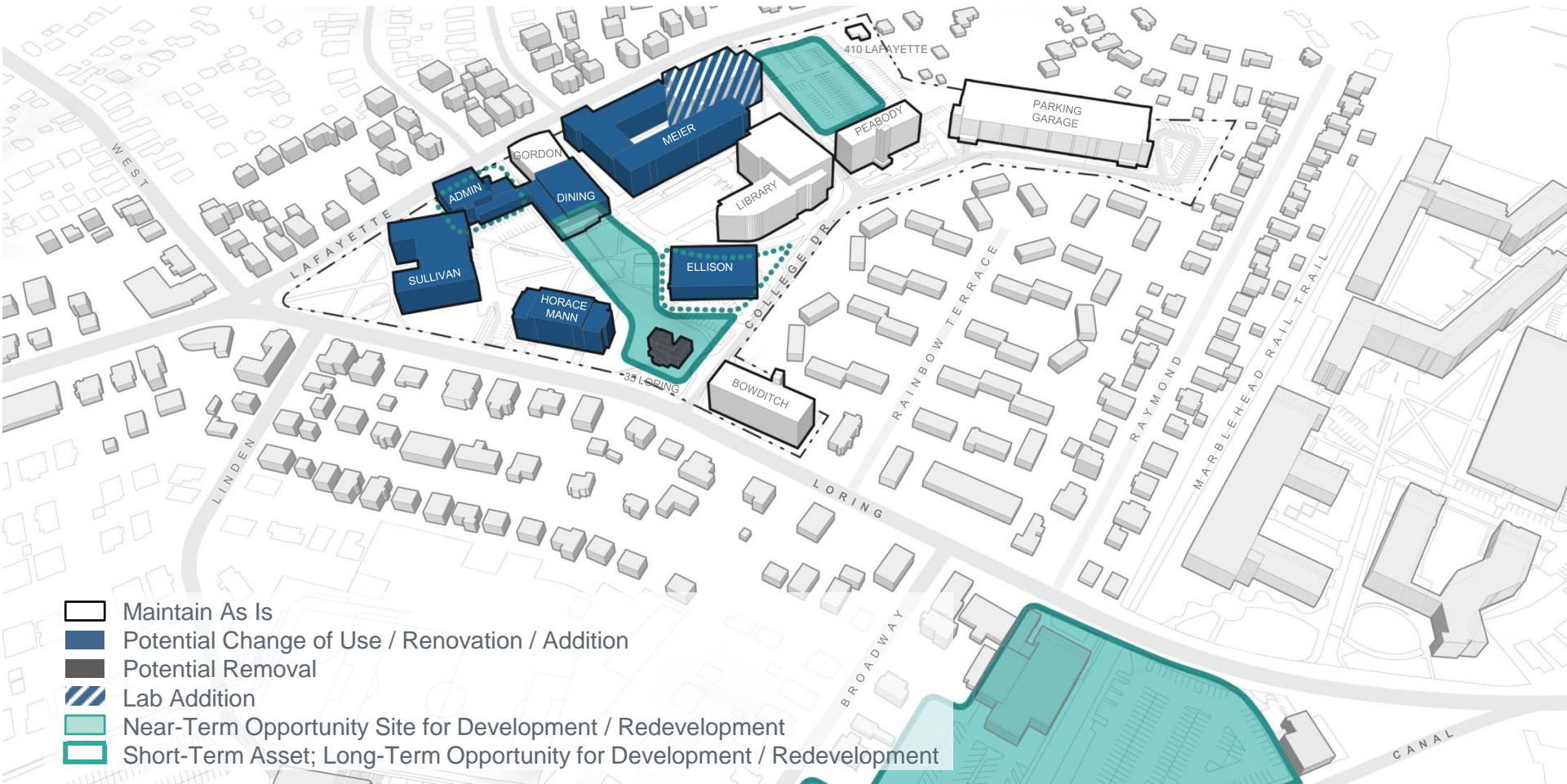
Administrative/Student Life

- Student Life
- Dining
- Residential Life
- Student Services
- Academic Services
- Administrative/ Admin Services
- Library

Other

- PEC + Academic Chairs
- Neighborhood Liaison Group
- SSUNAC
- Campus Community

Opportunity Sites

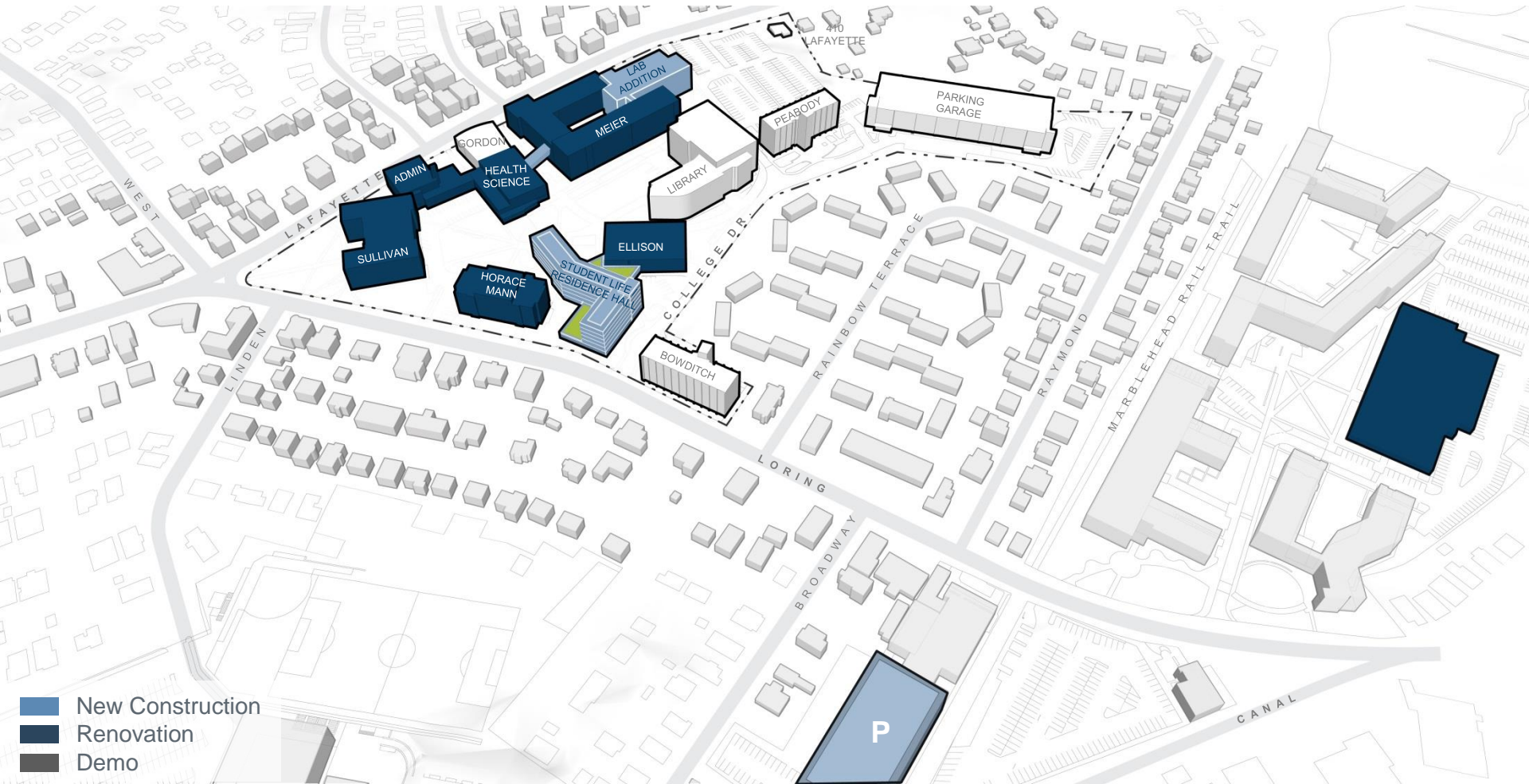


- Maintain As Is
- Potential Change of Use / Renovation / Addition
- Potential Removal
- Lab Addition
- Near-Term Opportunity Site for Development / Redevelopment
- Short-Term Asset; Long-Term Opportunity for Development / Redevelopment

North Campus Framework

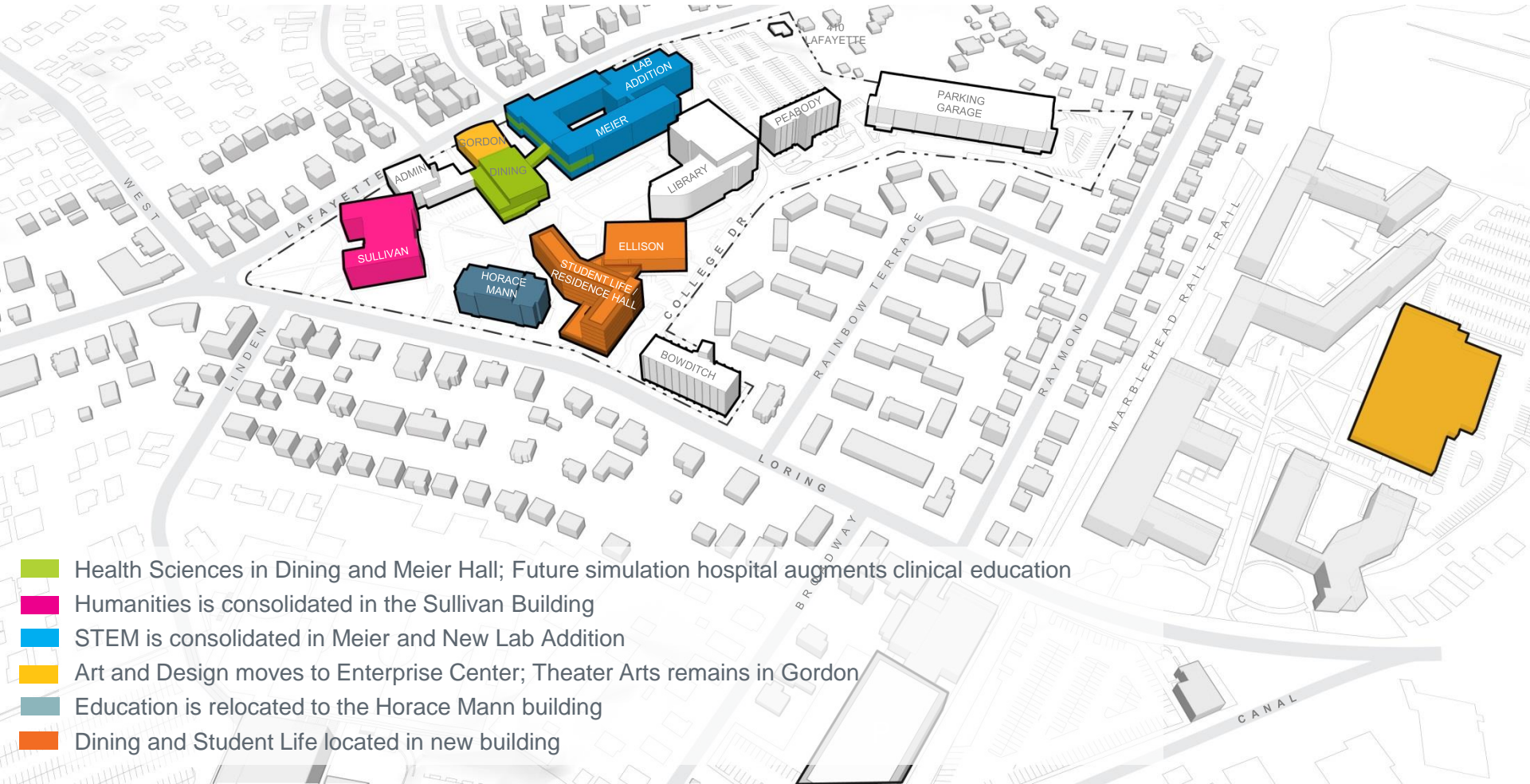


North Campus Framework



- New Construction
- Renovation
- Demo

North Campus Framework: Program Distribution



- Health Sciences in Dining and Meier Hall; Future simulation hospital augments clinical education
- Humanities is consolidated in the Sullivan Building
- STEM is consolidated in Meier and New Lab Addition
- Art and Design moves to Enterprise Center; Theater Arts remains in Gordon
- Education is relocated to the Horace Mann building
- Dining and Student Life located in new building

Arts, Humanities, and Education Renovation Opportunities

Art & Design at Enterprise Center

- Revitalize enrollment
- Create flexible, hybrid studios
- Relocate & replace kilns & equipment
- Showcase shared student studios
- Enable faculty research in shared studios

Humanities at Sullivan Hall

- Create study & gathering areas
- Integrate Interdisciplinary Studies & English
- Decompress office space
- Consider conversion of attic to office / seminar space in long term

Education at Horace Mann

- Homage to the legacy of the building
- Decompress office space
- Additional general purpose classrooms



Health Science Drivers

Health science is a strategic priority

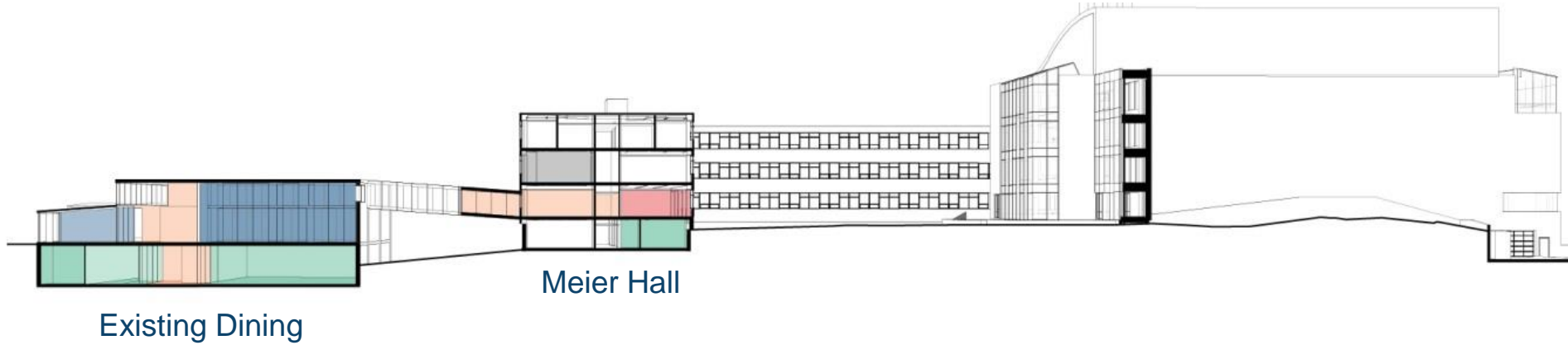
Adoption of 50/50 clinical hours plan

- Coordinate with move from S Campus
- Requires 12-18 month intensive evolution of pedagogy
- Does not assist MSN / NP clinical hours

2% Enrollment growth over 10 years

- Equalized across programs
- BSN growth from 200 to 225
- MSN / NP growth from 75 to 90
- OT remains at 30
- Space planning does not currently include additional programs such as:
 - Behavioral Health, Dental Hygiene, Nutrition, Radiology, Physical Therapy, Disability & Elderly Care

Dining & Meier Hall Renovations



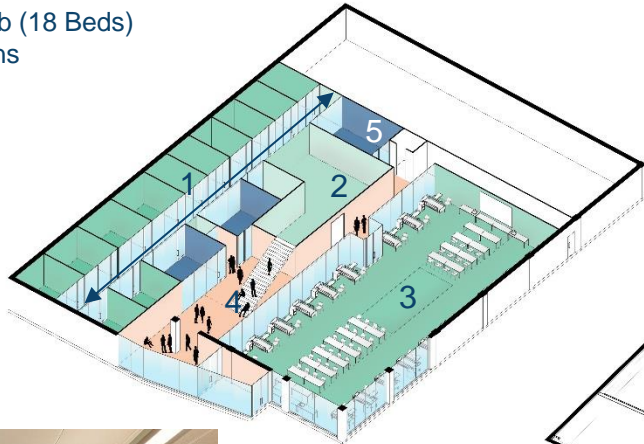
Existing Dining

Meier Hall

- Classroom
- Teaching Lab
- Experiential Learning
- Study/Circulation
- Office
- Vacated by Addition
- Vacated Program

Dining & Meier Hall Renovations – Ground Level

1. Inpatient / Ambulatory Sim
2. Storage & Control
3. Nursing Skills Lab (18 Beds)
4. Learner Commons
5. Debriefing
6. Computer labs

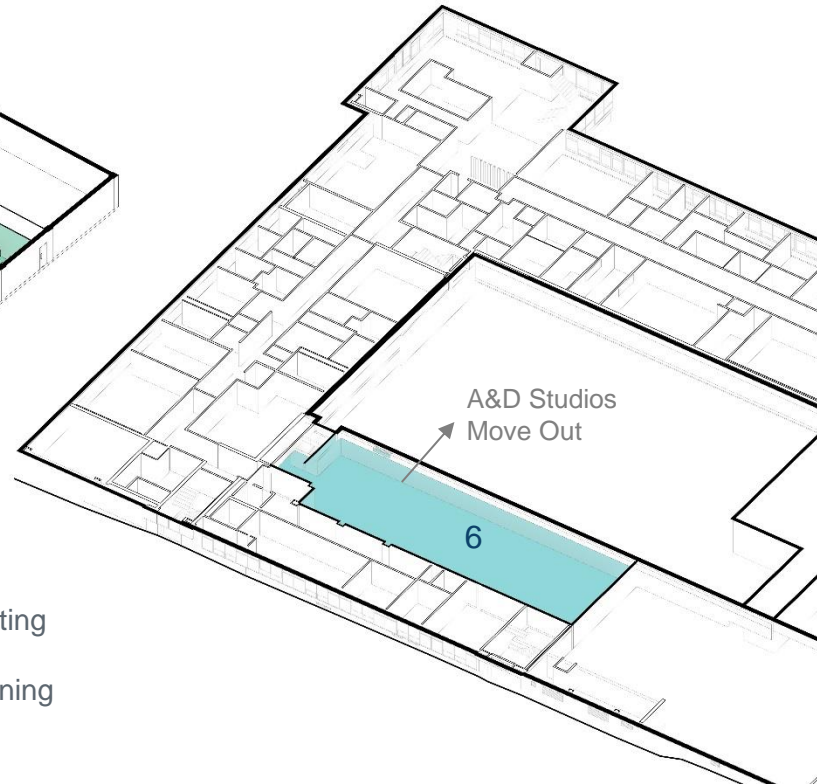


Nursing Skills Lab



Repurposed Dining

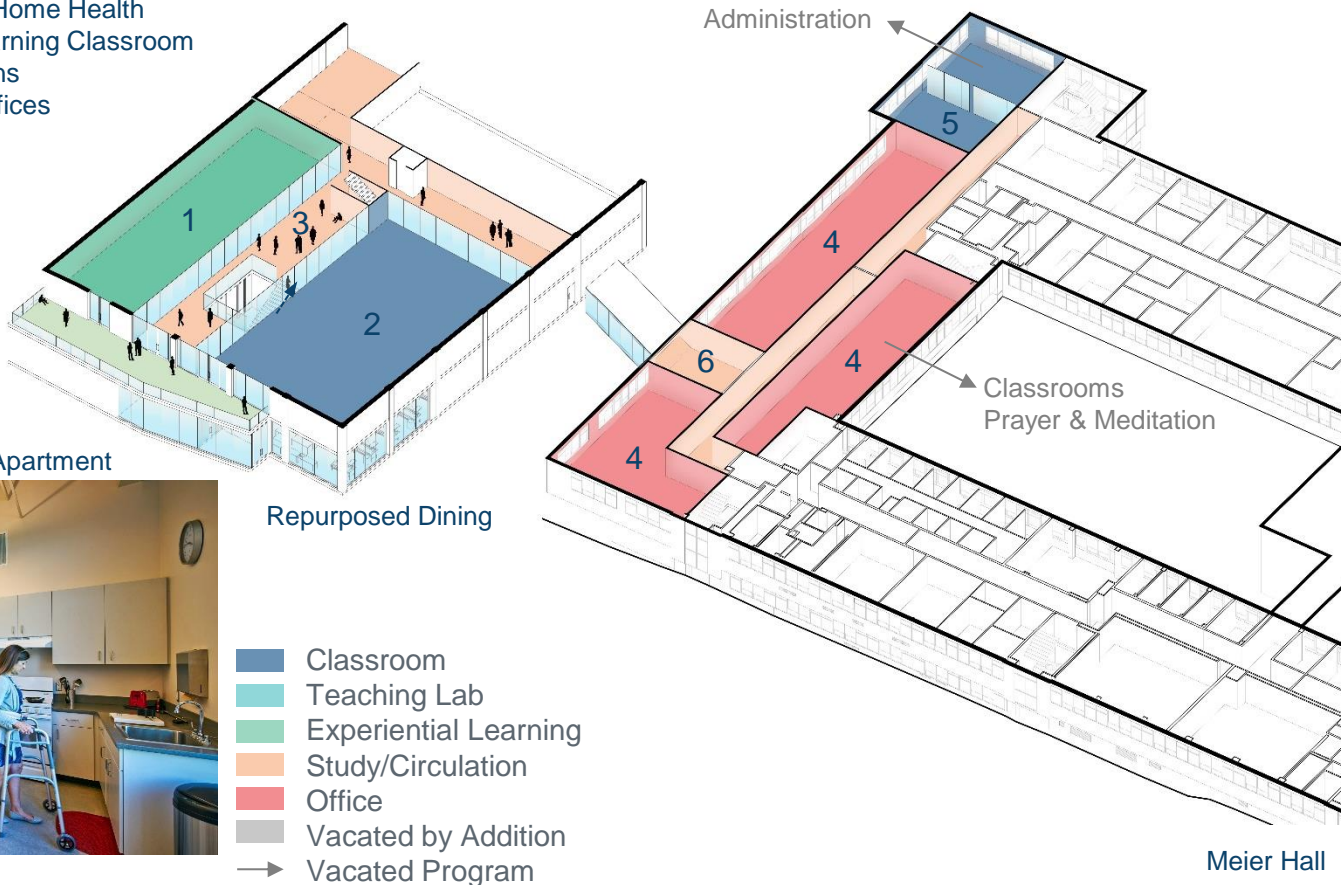
- Classroom / Meeting
- Teaching Lab
- Experiential Learning
- Study/Circulation
- Office
- Vacated by Addition
- Vacated Program



Meier Hall

Dining & Meier Hall Renovations – Level 2

1. OT Skills Lab & Home Health
2. Team Based Learning Classroom
3. Learner Commons
4. Nursing & OT Offices
5. Classroom
6. Bridge Access



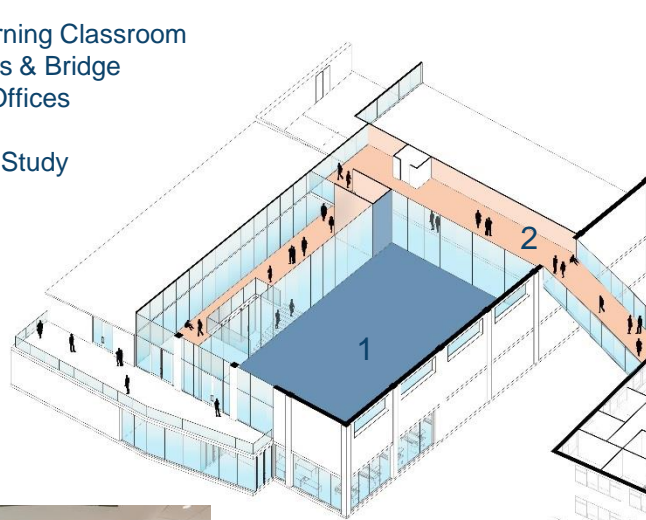
Home Health – Mock Apartment



Repurposed Dining

Dining & Meier Hall Renovations – Level 3

1. Team Based Learning Classroom
2. Learner Commons & Bridge
3. Criminal Justice Offices
4. Math Offices
5. Breakout / Group Study

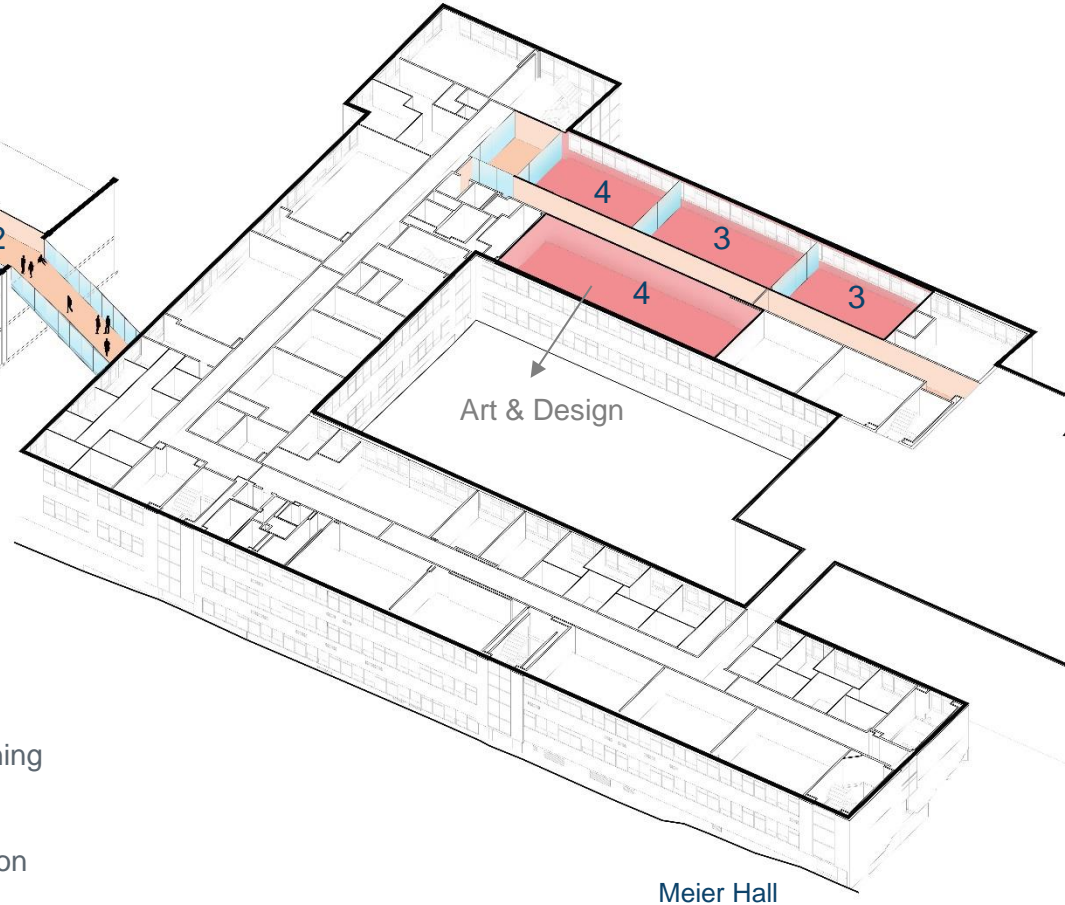


TBL Classroom



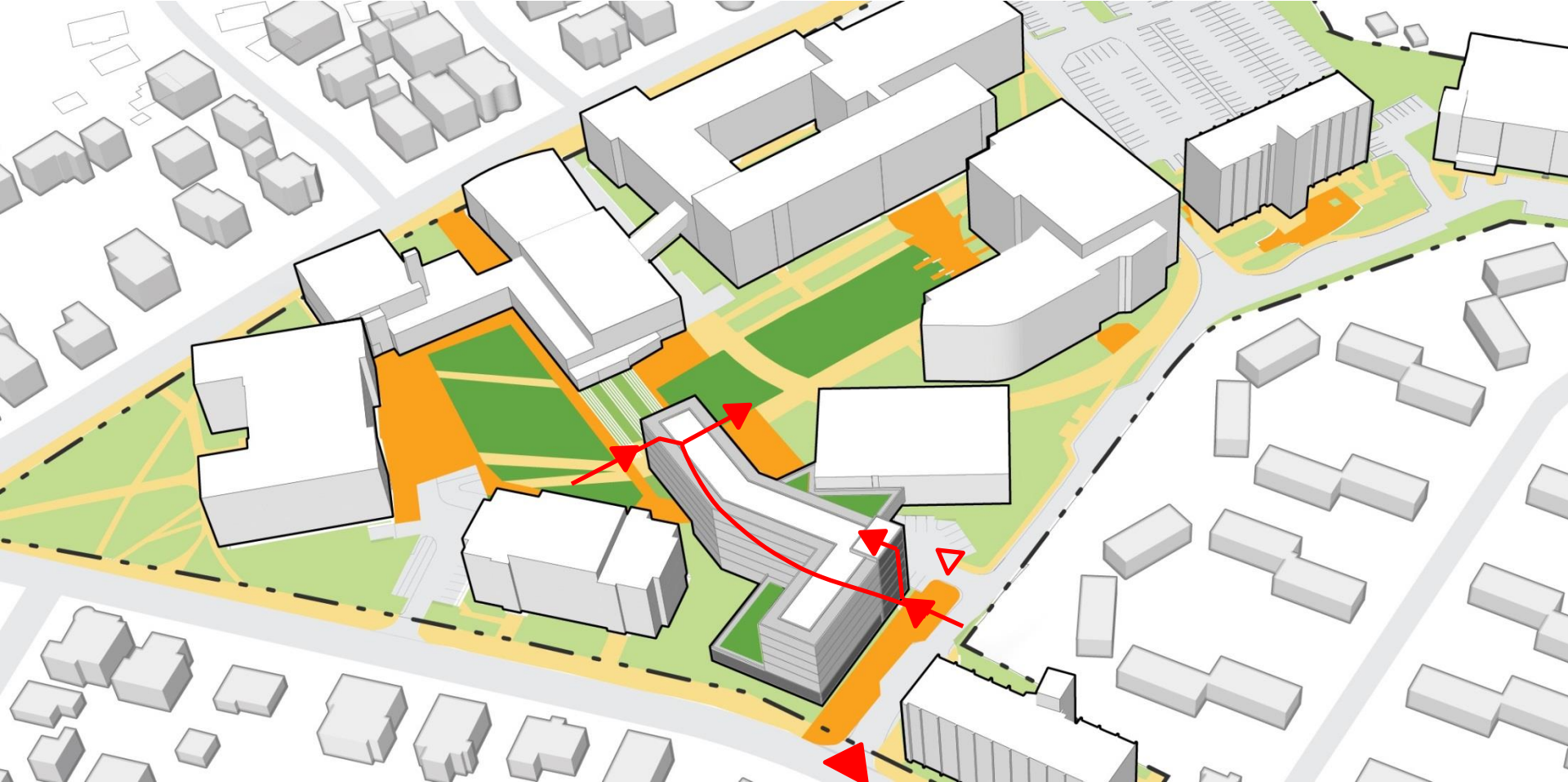
Repurposed Dining

- Classroom
- Teaching Lab
- Experiential Learning
- Study/Circulation
- Office
- Vacated by Addition
- ➔ Vacated Program



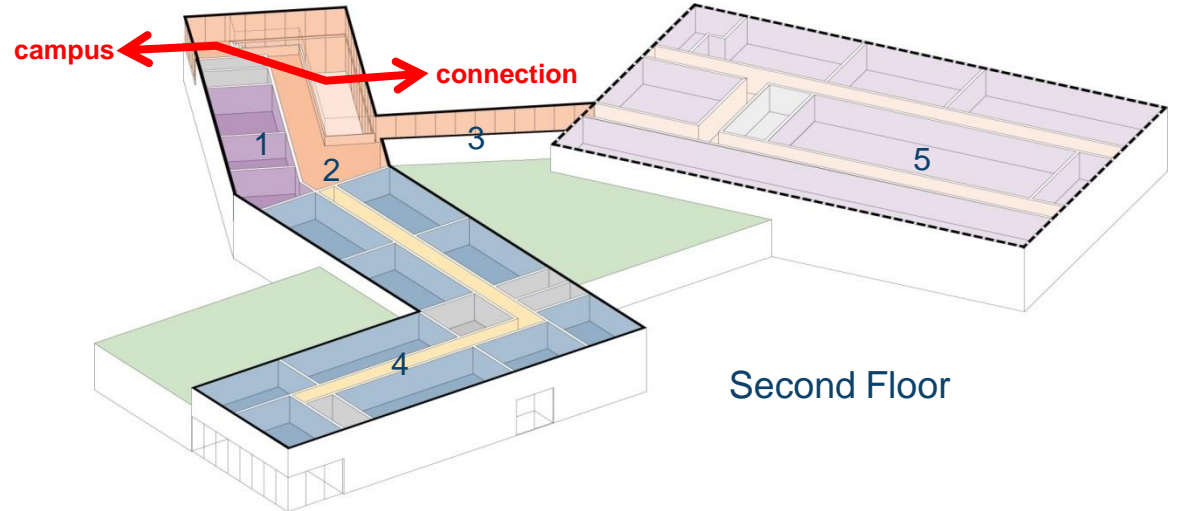
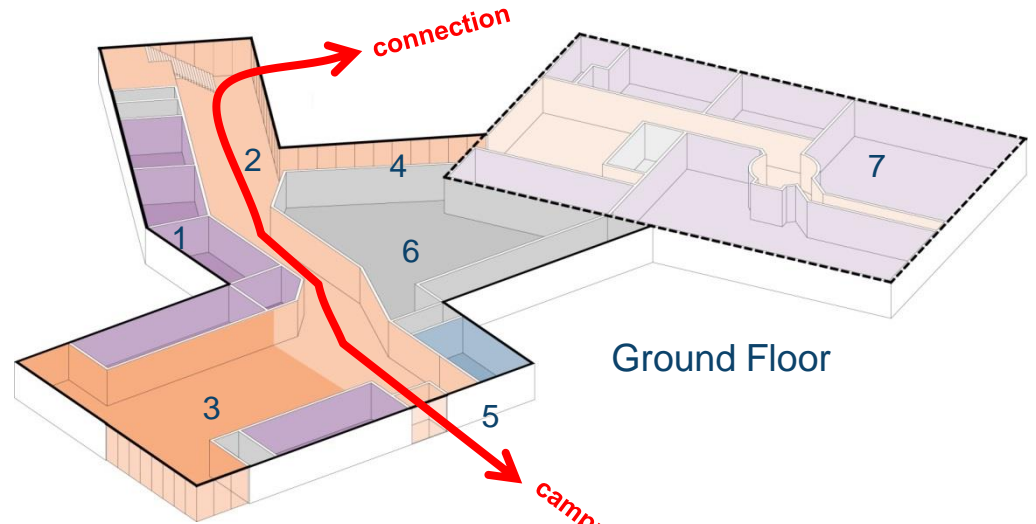
Meier Hall

Student Life



Student Life

1. Student Life Meeting & Flex Space
2. Student Life Concourse & Lounge
3. Dining
4. Café
5. Residents' Lobby
6. Kitchen, Stations, Support & Loading
7. Renovated Ellison



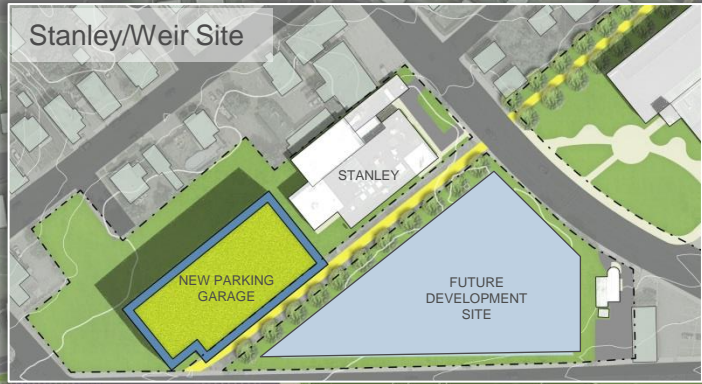
- Meeting & Flex
- Concourse & Lounge
- Resident Circulation & Lounge
- Dining
- Residential
- Ellison
- Support
- Green Roof

Precedents

Connecting Floor Levels with Landscape and Amphitheater



North Campus Illustrative Plan



View of connected Upper and Lower Quads

